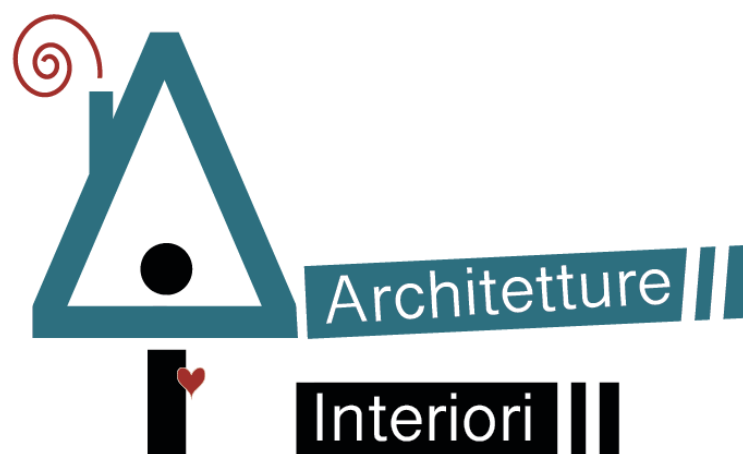




# *la nuova casa di Davide Boosta Dileo*

progetto di  
**ARCHITETTURE INTERIORI**



[www.architettureinteriori.it](http://www.architettureinteriori.it)

Roberto Albano  
Federica Corsiglia  
Andrea Rignanese

con Eleonora Imbriaco  
ed Elena Castronuovo



Il progetto è stato reso possibile  
grazie alle collaborazioni di:

MALM. WORKS  
Falegnameria FAL.PI.CA  
Retificio RIBOLA  
Artmosferae  
LB Tech

[www.malm.works](http://www.malm.works)  
[www.retificioribola.it](http://www.retificioribola.it)  
[www.artmosferae.com](http://www.artmosferae.com)  
[www.lbtech.it](http://www.lbtech.it)

Servizio fotografico a cura di:  
Monica Schettino

[www.monicaschettino.com](http://www.monicaschettino.com)

WONDER ROOM  
*Interrato*

















LIVING  
*Piano terreno*















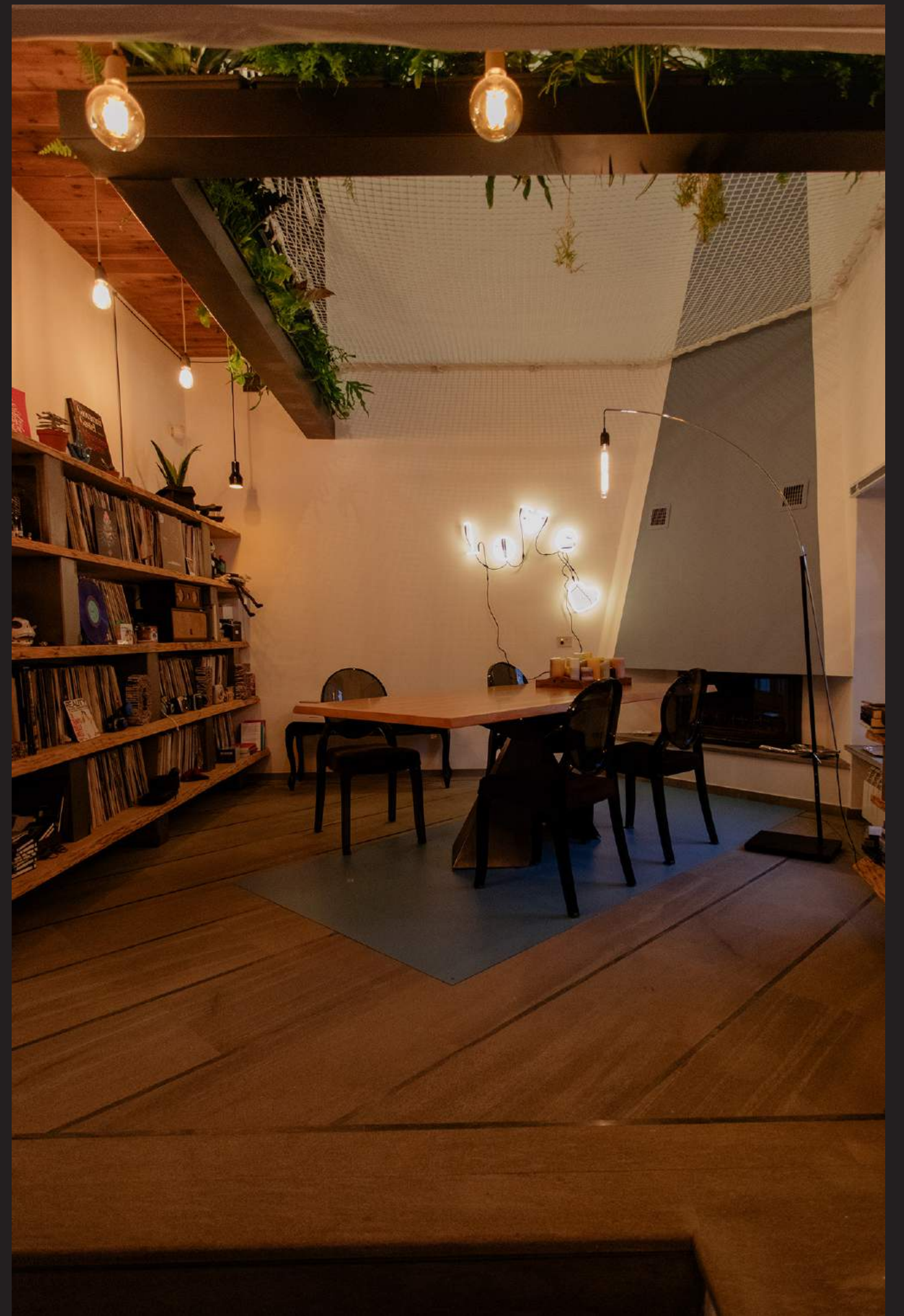


DINING

*Piano terreno, patio*

















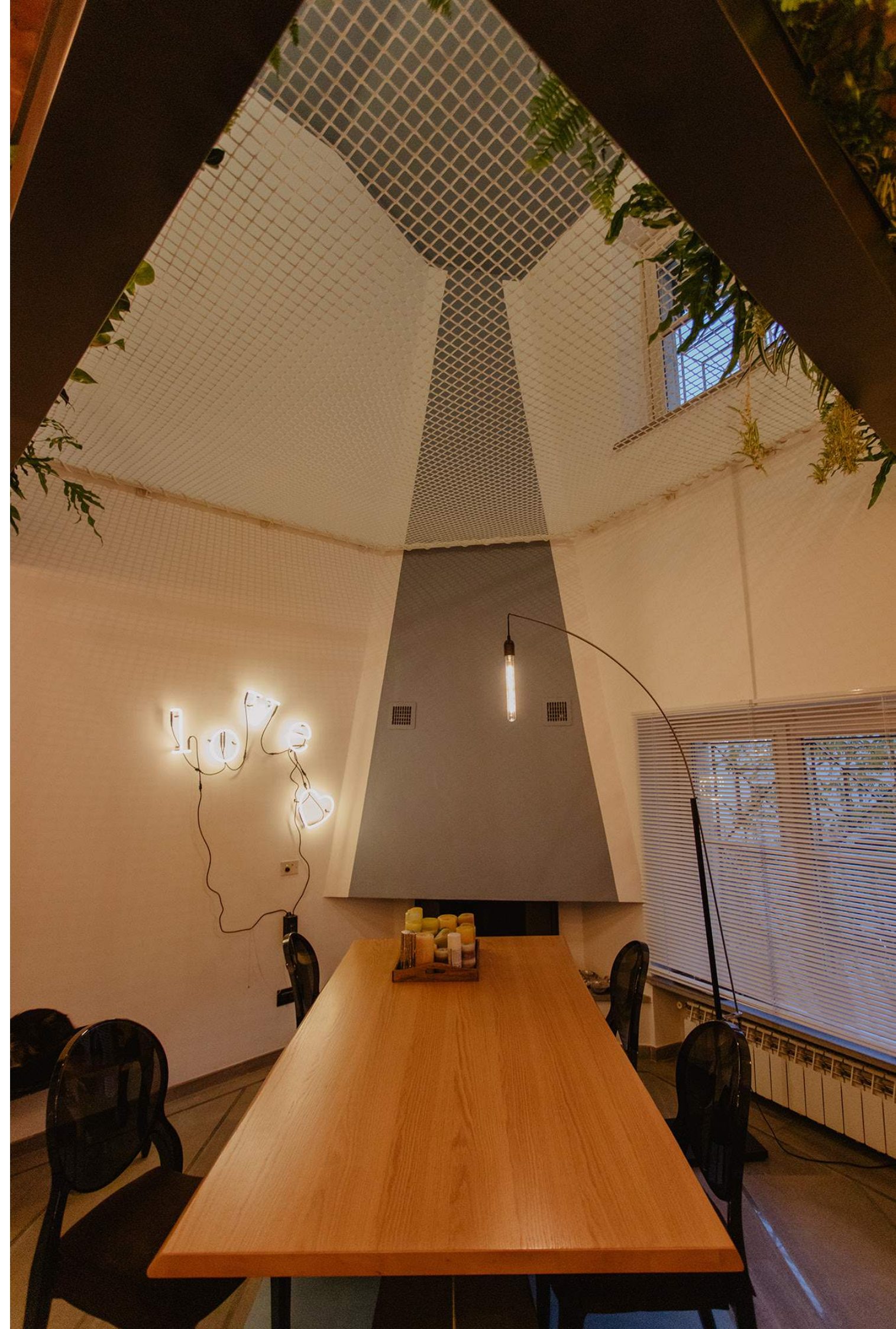
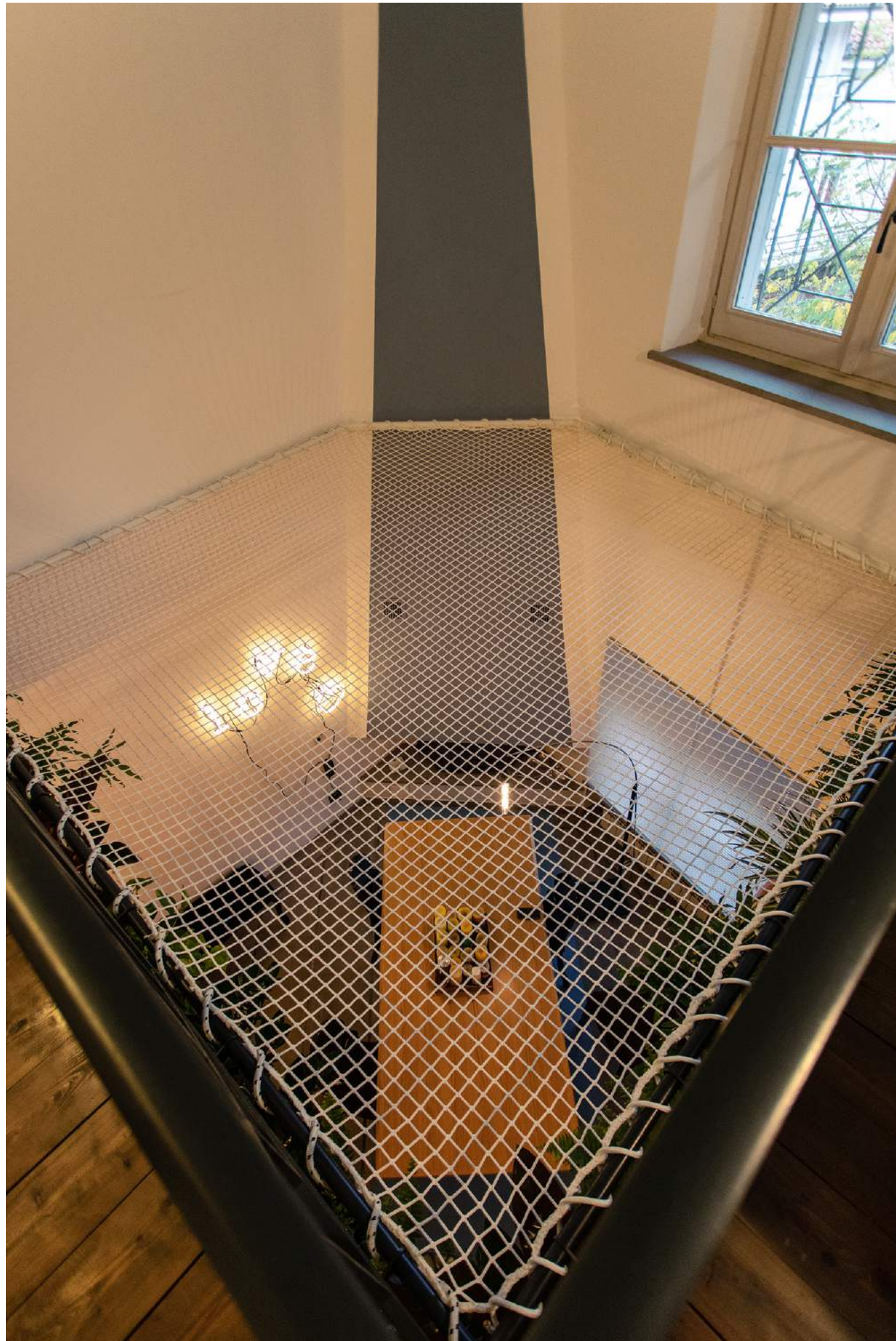




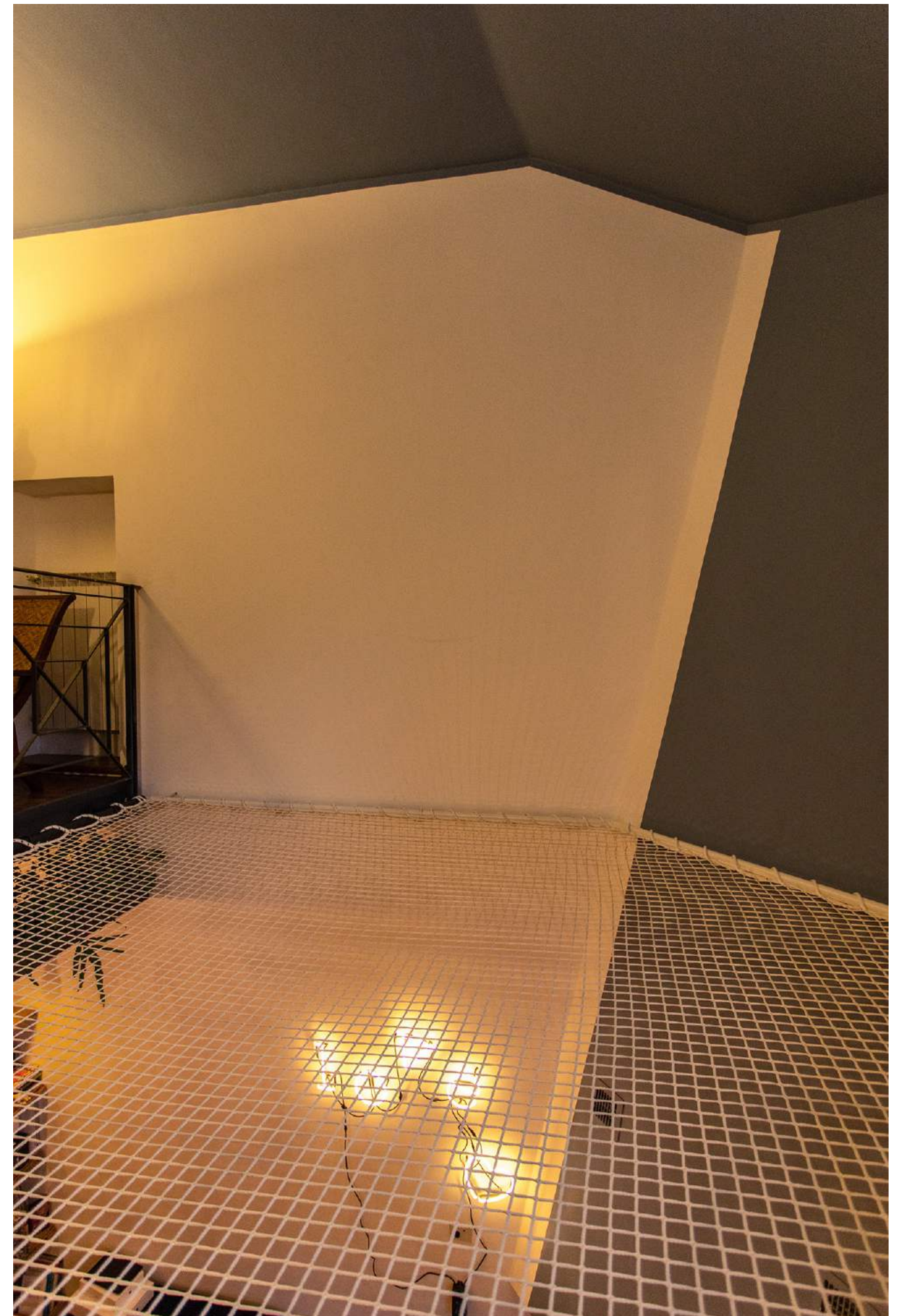
RETE SOSPESA  
*Primo livello*









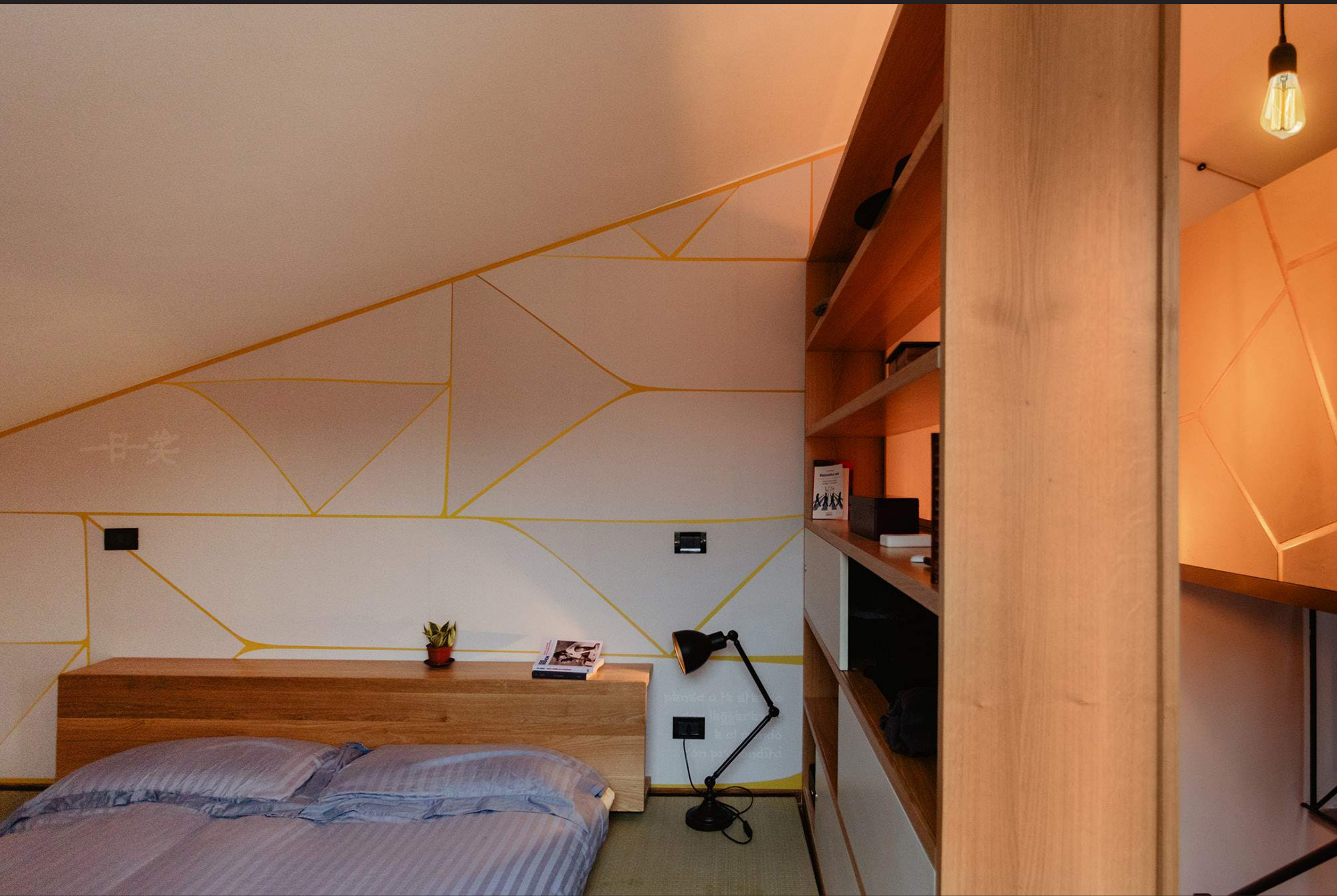




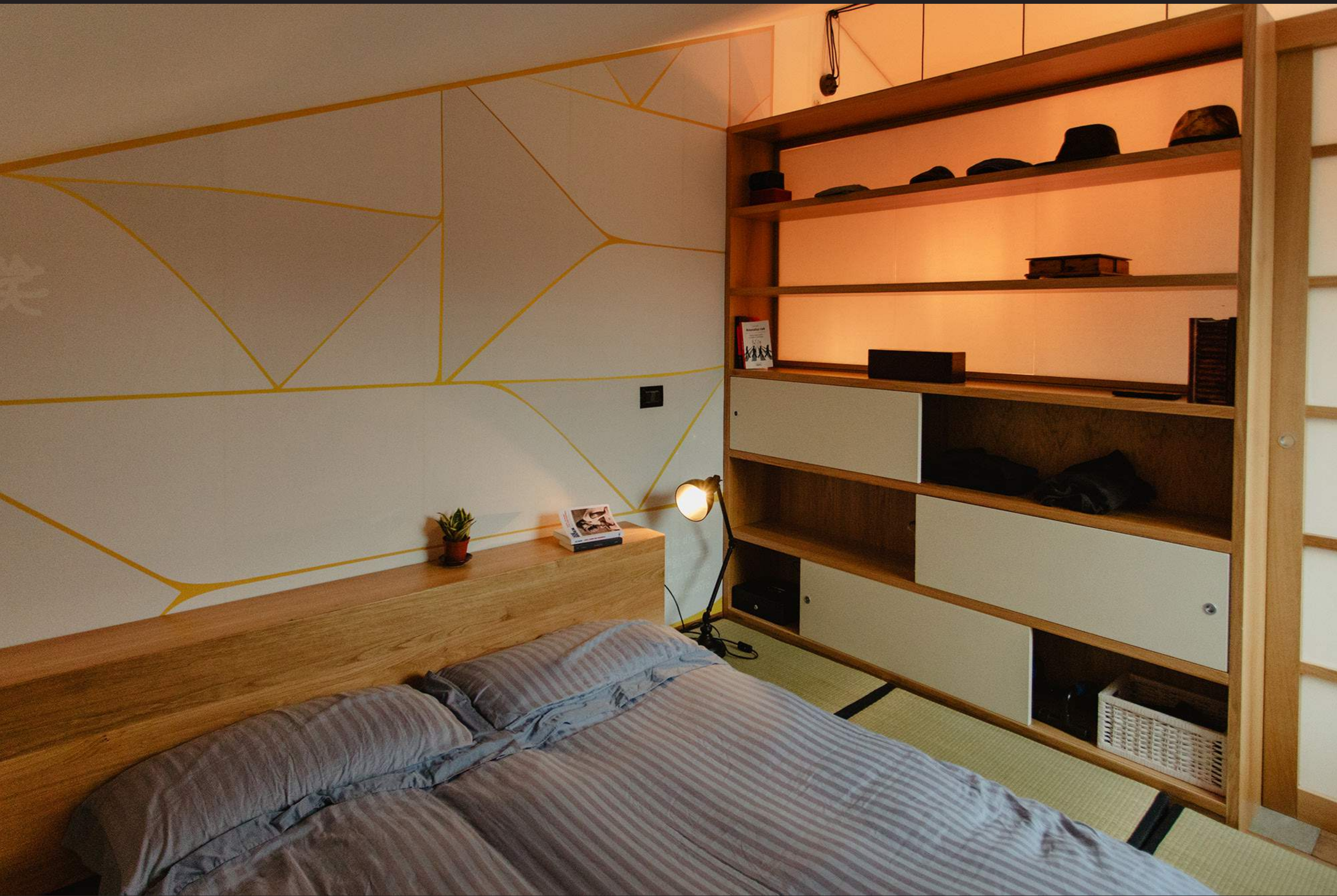
CAMERA  
PADRONALE  
*Mansarda*







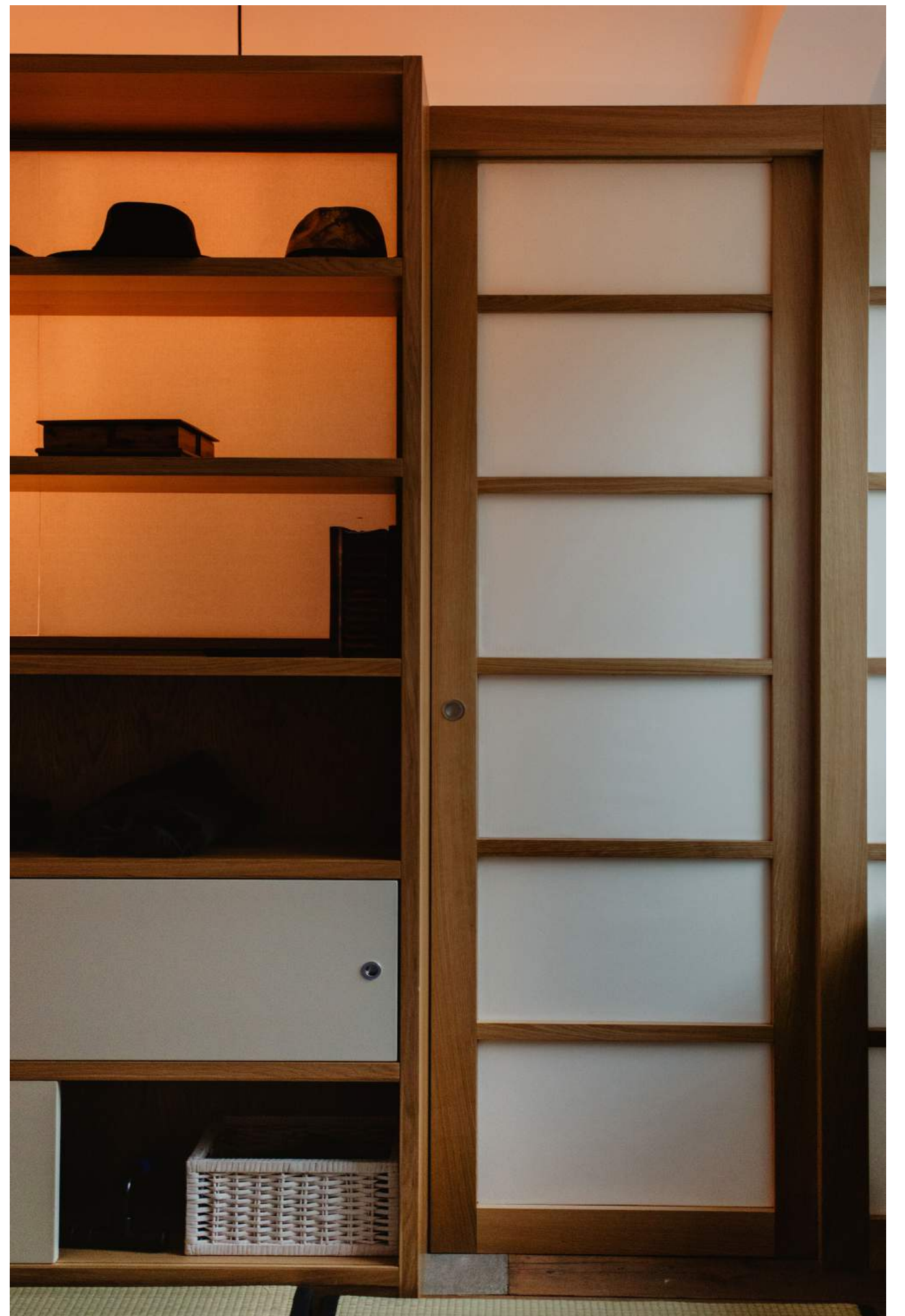










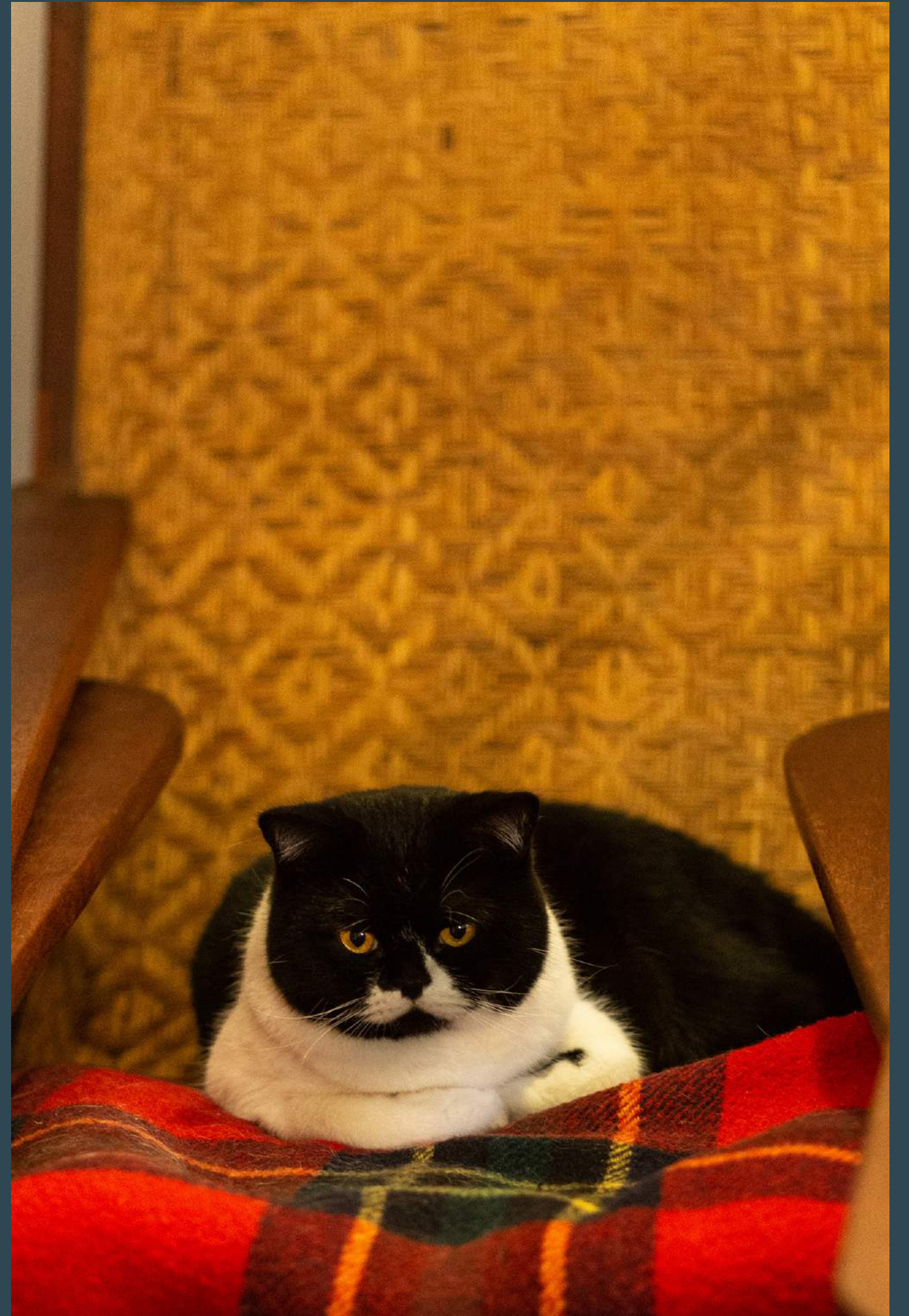








PROTAGONISTI  
*Gli abitanti*





















PROTAGONISTI  
*Lo studio*







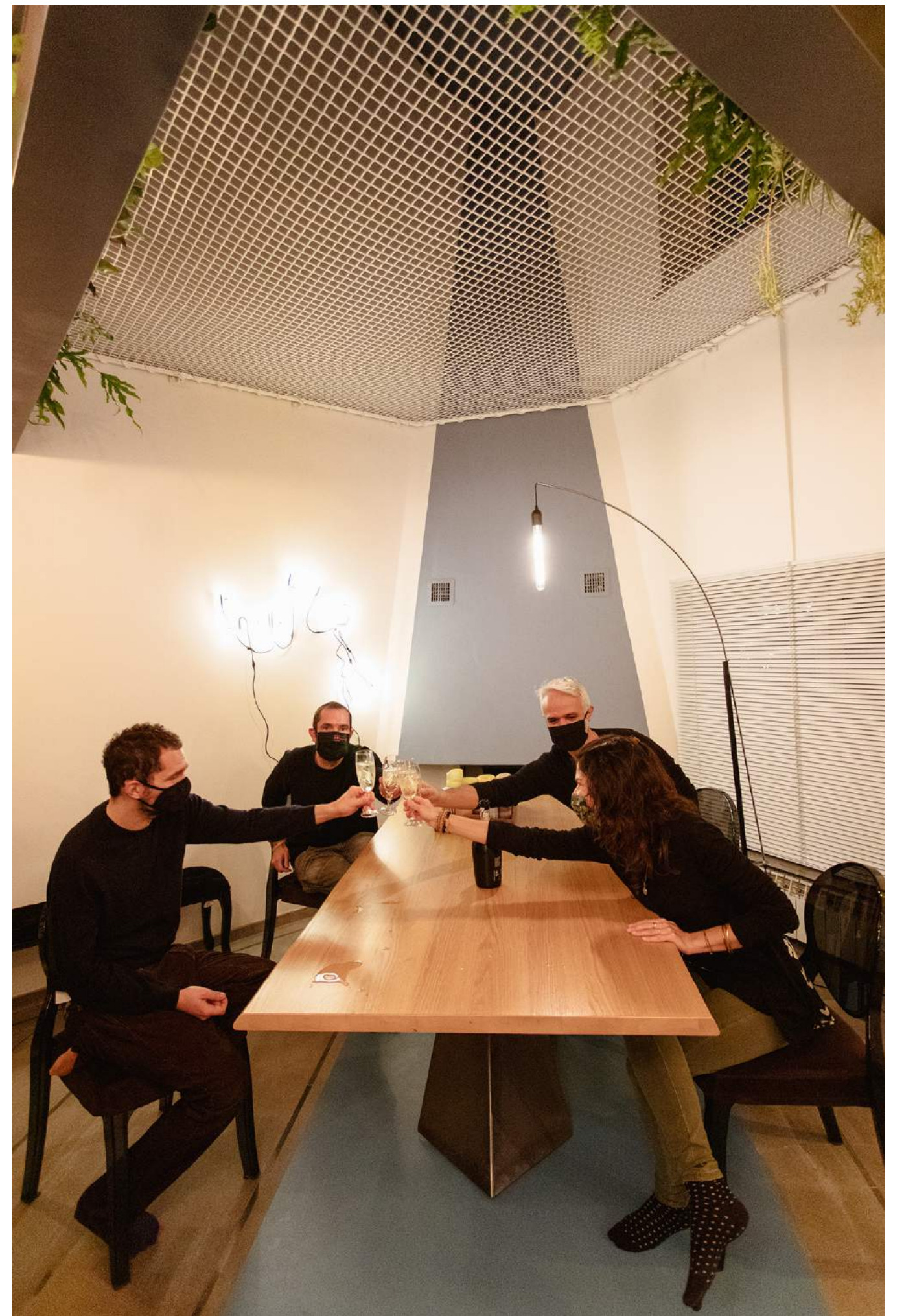














BENVENUTO A CASA,  
DAVIDE